



How to strengthen contact with relevant stakeholders, especially in the labour market

Barbara REGA



Funded by the
Erasmus+ Programme
of the European Union



LUNDS
UNIVERSITET



UNIVERSITÀ DEGLI STUDI
DI NAPOLI FEDERICO II

FIPDes in a nutshell

4

European
Universities:



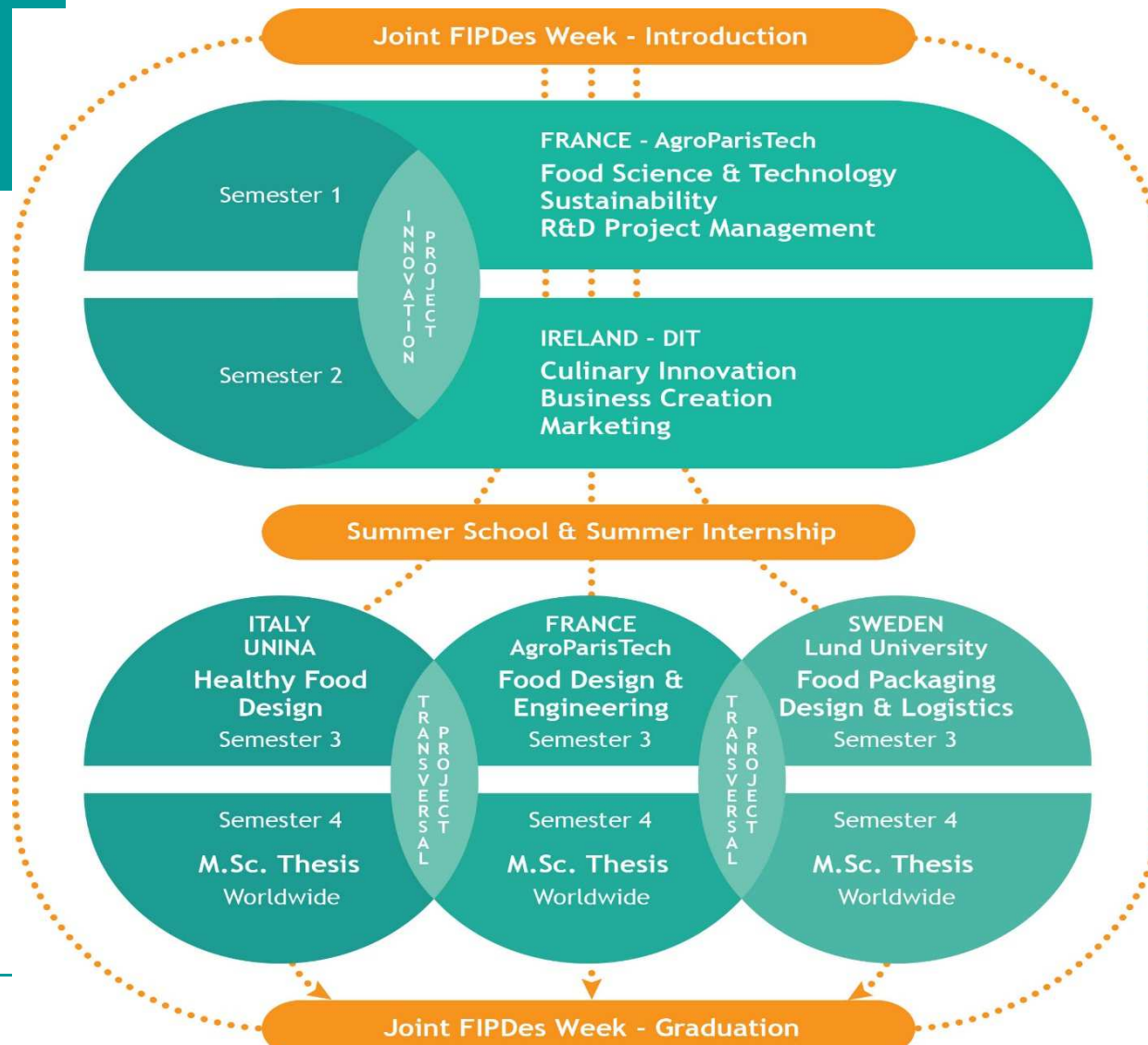
- Food Innovation and Product Design
- EMMC in 2011 & EMJMD in 2017
- EMJMD **success story** 2018
- **8** cohorts, **172** students, **57** Nationalities
- Very competitive recruitment (selection rate < 8%)
- Visibility spread over more than **100** different countries
- **Global network** of partners



Funded by the
Erasmus+ Programme
of the European Union





A joint programme



- International mobility
- Multidisciplinary
- 50% project-based
- Integration with local students & curricula
- Professional exposure
- Entrepreneurship

2018 Employability figures



		
Global Rate	90% *	66% ***
Before graduation	50% **	29% ***
Within 6 months	79% *	56% ***

*: 5 cohorts, 103 respondents over 120 alumni

**: over cohorts 4,5,6

***: 3600 alumni, 2015 report

International impact

Society



HEA



EC



Education, Audiovisual and Culture Executive Agency

Erasmus+: Higher Education – Erasmus Mundus Joint Master Degrees

EMJMD Cluster meeting on Sustainability and Employability

Brussels, 27-28 June 2017

Research



Kinetic study of furan and furfural generation during baking of cake models

R. Srivastava, J. Bousquière, M. Cepeda-Vázquez, S. Roux, C. Bonazzi, B. Rega*

UMR Ingénierie Procédés Aliments, AgroParisTech, Inra, Université Paris-Saclay, 91300 Massy, France



32nd EFFoST International Conference

6-8 November 2018 **Nantes, France**

Developing innovative food structures & functionalities through process & reformulation to satisfy consumer needs & expectations

How to leverage stakeholders?

Who?

- “Classic” ones?
- Potential ones?
- In the close future?

Why?

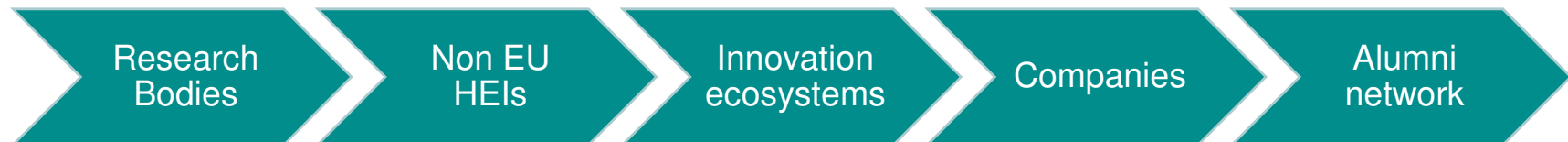
- Objectives
- Business model
- **Mutual benefit**

Starting point: Consortium vision and networks

FIPDes is devoted to the advancement of **knowledge** and **education** in **food innovation** to motivate and co-create holistic solutions for a **sustainable growth** at **local and global scale**, by training the food **researchers**, **innovators** and **entrepreneurs** of tomorrow **needed worldwide**.



Global Partnership



Course excellence

- Quality board
- Specific Trainings
- Invited professors

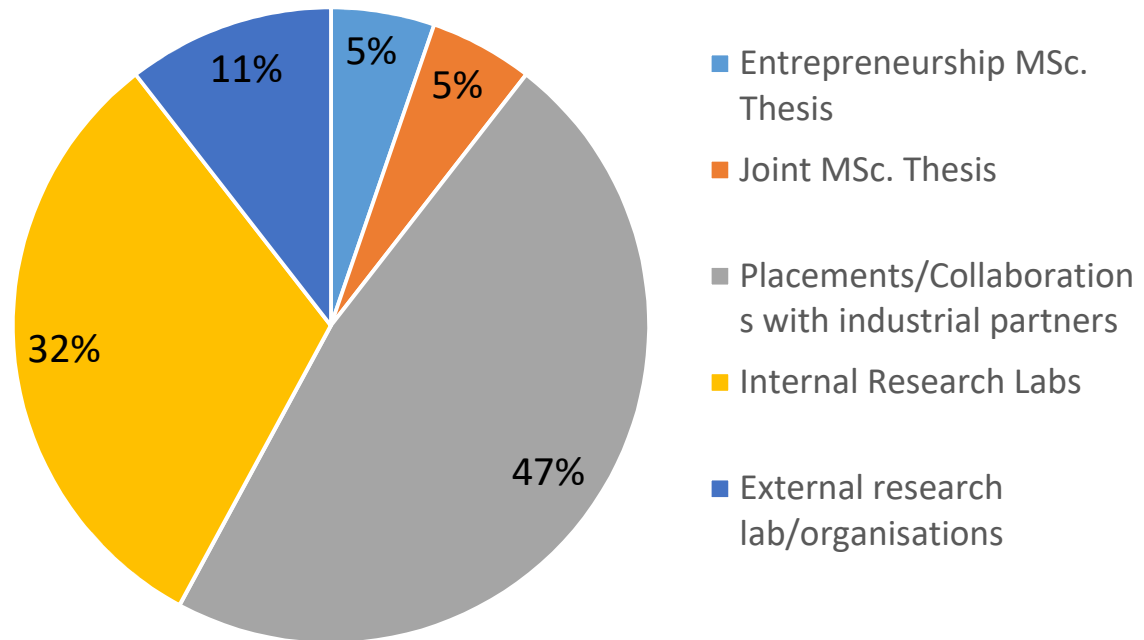
Employability

- MSc. Thesis
- Internships
- Projects
- Job platforms
- Networking

Programme Sustainability

- Financial support
- Institutional support
- Spin-offs
- Dissemination
- Events

2016 MSc. Thesis placements

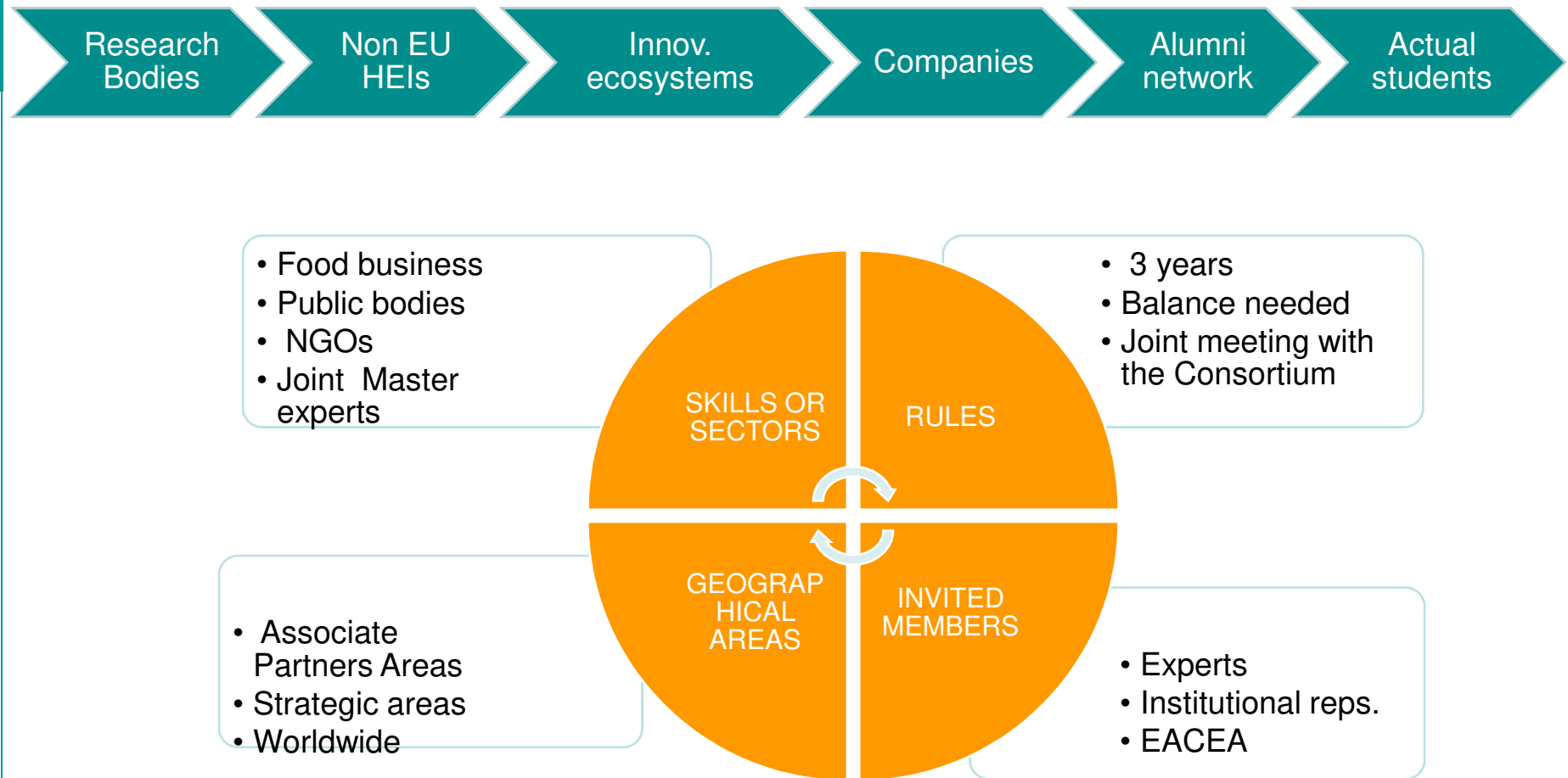


Embedded professional exposure

- M1 Optional Summer internship: 30% of students
WORLDWIDE
- New partners entries every year → (projects, internships)
- Continuum throughout different learning activities: Junior project + Summer Internship + MSc. Thesis + Job opportunities → Employability +++

FIPDes Advisory Board

A key organ for EMJMD quality and leverage of Stakeholders



Thank you!
Any question?



Funded by the
Erasmus+ Programme
of the European Union

FIPDes
Food Innovation & Product Design


ProDeJIP
Association for the Promotion and the Development
of Joint International Programmes in Higher Education

 **AgroParisTech**
université
PARIS-SACLAY



LUNDS
UNIVERSITET



UNIVERSITÀ DEGLI STUDI
DI NAPOLI FEDERICO II

 **AgroParisTech**

FIPDes
Food Innovation & Product Design