

## Workshop 1: How to create synergies among EM coordinators, within an institution.

-Ms Elisabeth Axell & Ms Ulrika  
Qvist Mathiesen  
EMA2 Lund University



LUND  
UNIVERSITY

# How to create synergies among EM coordinators within an institution?

EM Action 2, Lund University perspectives

*Elisabeth Axell and Ulrika Qvist Mathiesen*



# Agenda

- Presentation LU
- LU's engagement in EM2
- Then and now
- Synergies EM2 Coordinators
- Synergies EM2 Partner Coordinators
- Integration of Faculties and Departments



# Lund University



- 46 000 students
- 2 800 post-graduate students
- 6000 employees
- Eight faculties
- Several campuses
- 620 million Euros in turnover
- Internationalization – part of strategic plan
- 1000 outgoing exchange students
- 1700 incoming exchange students





# EM Action 2 at Lund University



- Participates in 34 projects
- Coordinates 11 projects
- Involved in 17 different lots



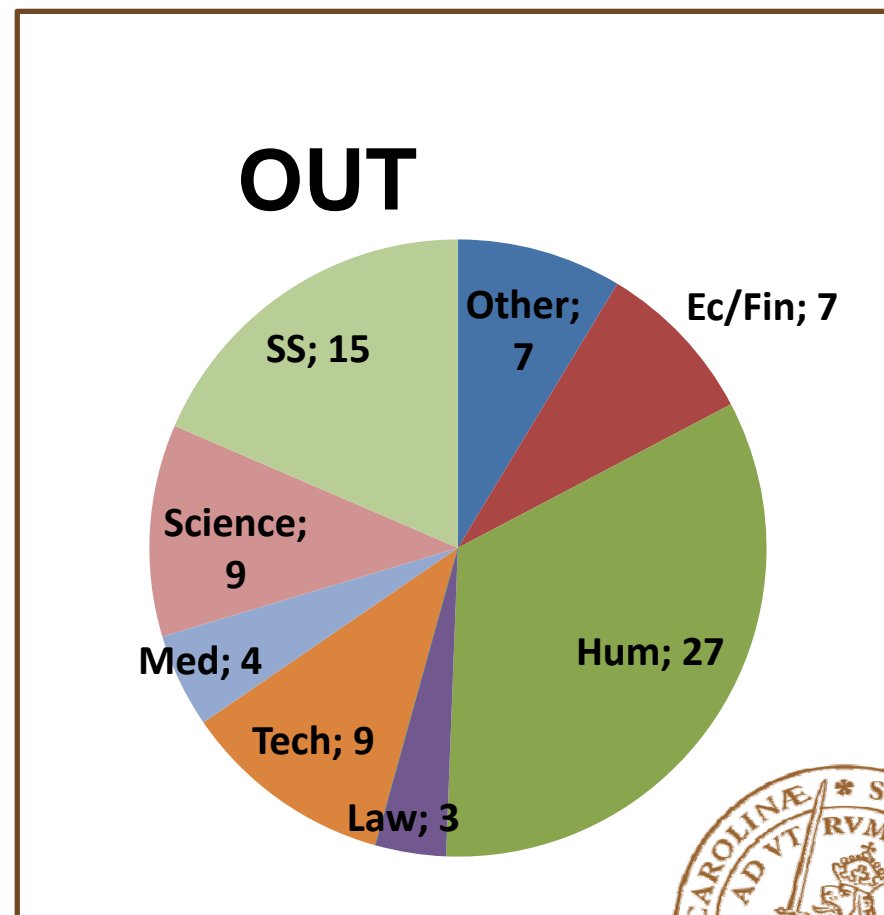
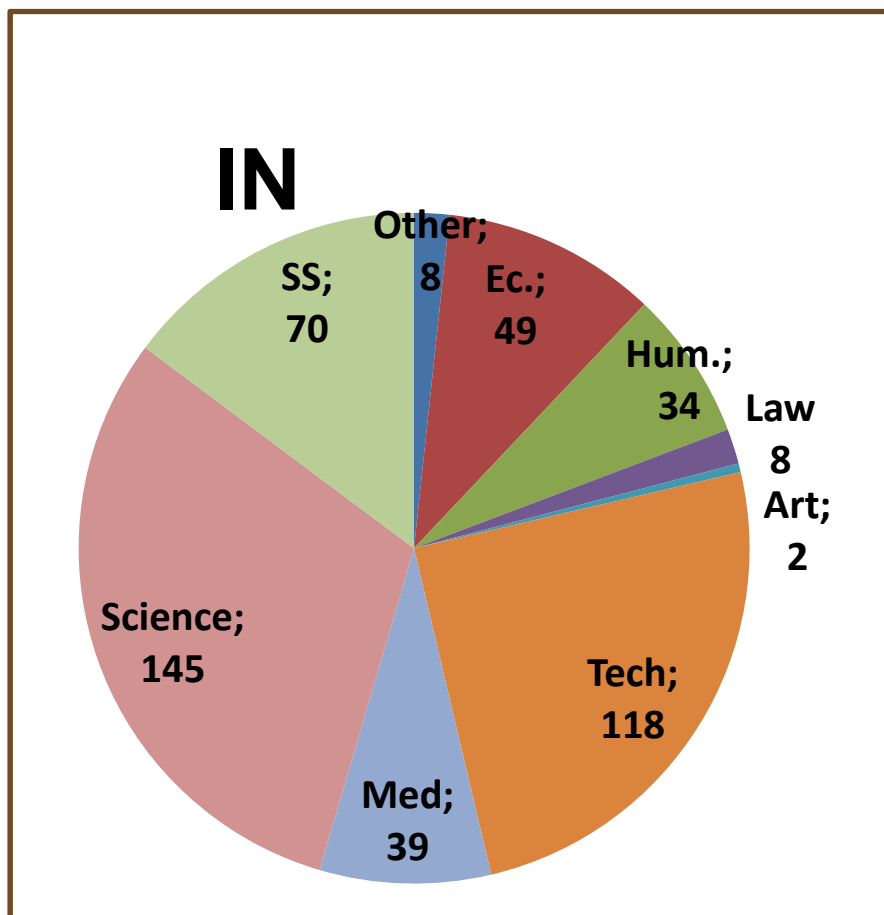
# EM Action 2 at Lund University

• Jordan, Syria, Lebanon	2007	2008	2009	2010	
• Iran, Iraq, Yemen	2007	2008	2009	2010	2011
• Centralasia	2007	2008	2009		
• Western Balkan		2008	2009	2010	
• India		2008	2009		
• Brazil		2008	2009		
• Chile		2008			
• ACP		2008			
• Egypt			2009	2010	
• China			2009		
• Asia Regional				2010	2011
• GULF				2010	2011
• South Africa				2010	2011
• Syria, Lebanon					2011
• Argentina					2011
• Egypt, Lebanon					2011
• Marocko, Algeria, Tunisia					2011



# EM Action 2 Mobility in Lund 2007-2011

Total mobility	554
In	473
Out	81



# Why EM Action 2?

- Cooperation in new regions
- Improved cooperation in regions where LU already collaborates
- Excellent students and scholars
- Increased visibility
- In line with strategic goals
- Integration with strategic networks, e.g. Utrecht network, Tempus projects, Universitas 21





## Then...

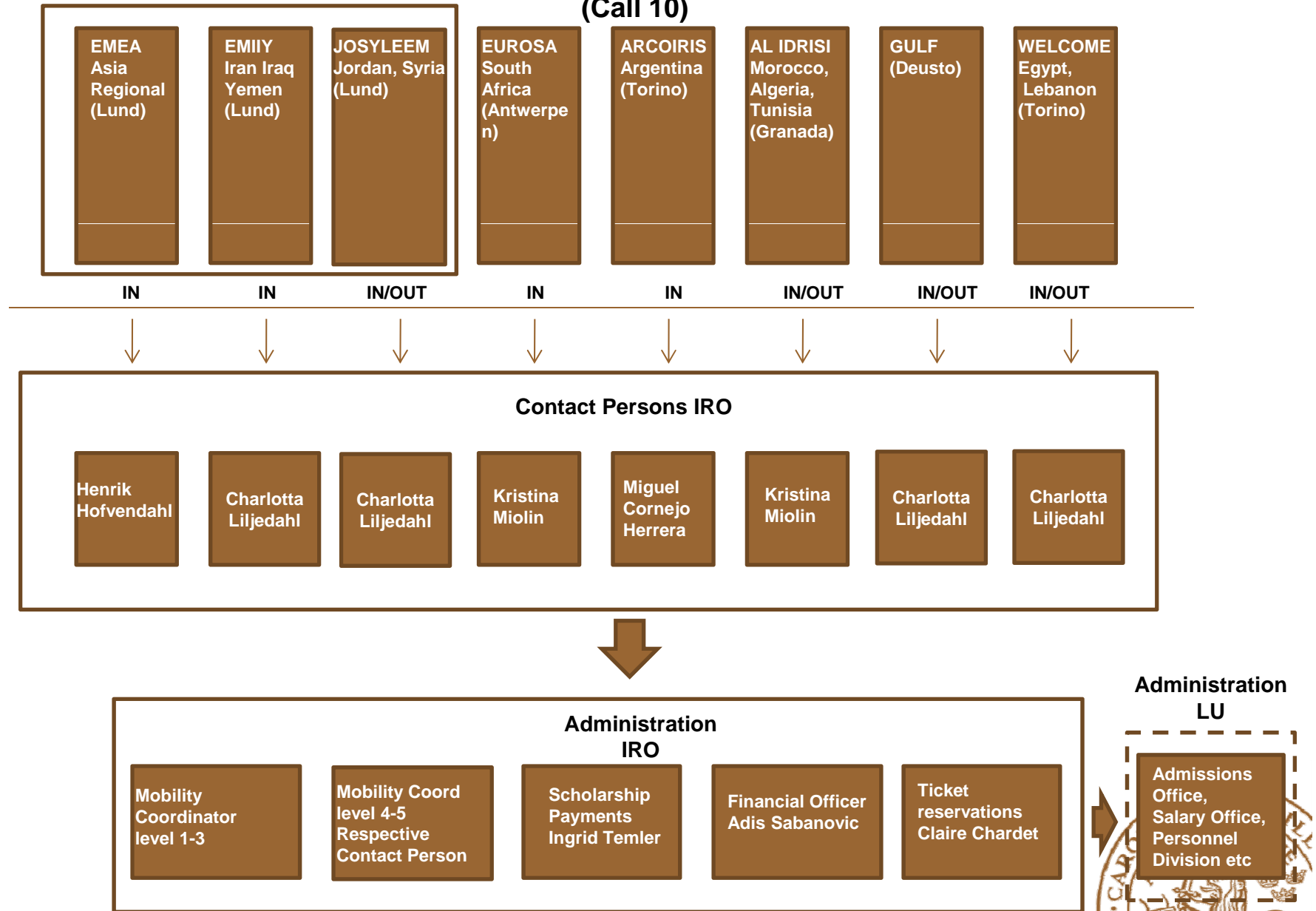
- Ad-hoc-  
no structure, no organization
- Excel sheets
- Contact person/ coordinator responsible for all activities
- Central and Faculty level
- 3 projects
- Project- Handbook

## Now...

- Set organization
- Database
- Specialised teams and functions, in- and outside IRO
- Centralized handling
- 34 projects



## Erasmus Mundus Action 2 Projects, LU as Partner (Call 10)



# Development of EM Coordinating Team

- From 1 project to 7 projects
    - Development of commonly used databases
    - Similar documents are used
    - Interpretation of rules
    - Similar web solutions
    - Apparent synergies, but.....
    - Low extent of cooperation, due to time constraints
- ➔ Beginners mistakes more than once



# Reorganization of EM Coordinating Team

- Increased number of projects (11)
  - ➔ Need to reorganize, to create additional synergies
    - Structured workplan and division of responsibilities
    - Staff who work with all projects
    - Development of common guidelines and FAQ
    - Streamlined processes for application, nomination, financial transfers, lumpsum, travel, insurance, final reports, etc.



# Lot Specific Issues



- Geographical reference groups
- Approach towards external actors
- Communication with partner universities
- Regional conferences





# Synergies EM2 Partners at LU

- Available fields of studies
- Common structure:
  - Data base (mobility, scholarships, reports)
  - Payment of scholarships
  - Travel arrangements
  - Mobility coordinator
  - Document support
  - Information material and meetings
  - Social activities
- National reference



# Intra-University Challenges

- Tight time frames
- Different assessment criterias and systems
- Quality requirements – higher aims of the projects
- Major input – minor outcome
- Financing of fourth year PhD's
- Formal admission of Phd
- ...Who is responsible for what?



# Integration of Departments and Faculties Perspectives

- Consult faculties about which projects to participate in/coordinate
- Integration of strong regional actors, e.g. SASNET
- Consult faculties in selection of partner universities
- Connect departments and faculties with relevant partner universities
- Discuss offers with departments/research groups
- Discussion regarding EM organization
- Integration of departments perspectives regarding selection





LUND UNIVERSITY

Thank you for  
listening!



# Subject for discussion

- How can the challenge with different timeframes, databases and assessment criteria be met?
- How can EM 2 projects be integrated at department and faculty level?
- Would it be beneficial if the EM 1 and EM 2 projects would be more integrated in the future?
- Good effects of EM – how do you disseminate that information to the rest of the university?

